

KEDIA ADVISORY



DAILY BULLION REPORT

24 Sep 2025

- BULDEX
- GOLD
- SILVER



Kedia Stocks & Commodities Research Pvt. Ltd.

Research Advisory | White Labelling | Digital Marketing



BULDEX SNAPSHOT

Commodity	Expiry	Open	High	Low	Close	% Change
MCXBULDEX	23-Sep-25	26501.00	26783.00	26470.00	26768.00	2.31
MCXBULDEX	29-Oct-25	26500.00	26814.00	26500.00	26736.00	2.16

BULLION SNAPSHOT

Commodity	Expiry	Open	High	Low	Close	% Change
GOLD	3-Oct-25	112200.00	114179.00	112174.00	113836.00	1.43
GOLD	5-Dec-25	113321.00	115139.00	113219.00	114839.00	1.43
GOLDMINI	3-Oct-25	112098.00	114090.00	111909.00	113715.00	1.47
GOLDMINI	5-Nov-25	112613.00	114539.00	112508.00	114248.00	1.45
SILVER	5-Dec-25	133250.00	135700.00	133178.00	135062.00	1.13
SILVER	5-Mar-26	134705.00	137247.00	134632.00	136392.00	1.11
SILVERMINI	28-Nov-25	132907.00	135577.00	132906.00	134983.00	-4.94
SILVERMINI	27-Feb-26	134492.00	136951.00	134477.00	136371.00	2.57

OPEN INTEREST SNAPSHOT

Commodity	Expiry	% Change	% Oi Change	Oi Status
MCXBULDEX	23-Sep-25	2.31	-43.96	Short Covering
MCXBULDEX	29-Oct-25	2.16	483.33	Fresh Buying
GOLD	3-Oct-25	1.43	-17.36	Short Covering
GOLD	5-Dec-25	1.43	9.53	Fresh Buying
GOLDMINI	3-Oct-25	1.47	-221.08	Short Covering
GOLDMINI	5-Nov-25	1.45	-48.37	Short Covering
SILVER	5-Dec-25	1.13	-7.13	Short Covering
SILVER	5-Mar-26	1.11	6.22	Fresh Buying
SILVERMINI	28-Nov-25	1.17	-4.94	Short Covering
SILVERMINI	27-Feb-26	1.19	2.57	Fresh Buying






INTERNATIONAL BULLION SNAPSHOT

Commodity	Open	High	Low	Close	% Change
Gold \$	3746.47	3791.11	3736.73	3764.29	0.53
Silver \$	44.03	44.49	43.64	43.95	-0.20

RATIOS

Ratio	Price	Ratio	Price	Ratio	Price
Gold / Silver Ratio	84.28	Silver / Crudeoil Ratio	23.98	Gold / Copper Ratio	124.90
Gold / Crudeoil Ratio	20.21	Silver / Copper Ratio	148.18	Crudeoil / Copper Ratio	6.18

Important levels for Jewellery/Bullion Dealers

 <p>MCX GOLD</p>	Booking Price for Sellers		Booking Price for Buyers	
	114146.00		113526.00	
	114356.00		113316.00	
 <p>MCX SILVER</p>	Booking Price for Sellers		Booking Price for Buyers	
	135782.00		134342.00	
	136542.00		133582.00	
 <p>RUPEE</p>	Booking Price for Sellers		Booking Price for Buyers	
	89.05		88.69	
	89.27		88.47	
 <p>COMEX GOLD</p>	Booking Price for Sellers		Booking Price for Buyers	
	3779.00		3753.70	
	3791.90		3740.80	
 <p>COMEX SILVER</p>	Booking Price for Sellers		Booking Price for Buyers	
	44.43		43.61	
	44.74		43.30	

Click here for download Kedia Advisory **Special Research** Reports



Technical Snapshot



Be Cautious. Important resistance at 115000 while Support at 112200.

Observations

Gold trading range for the day is 111390-115400.

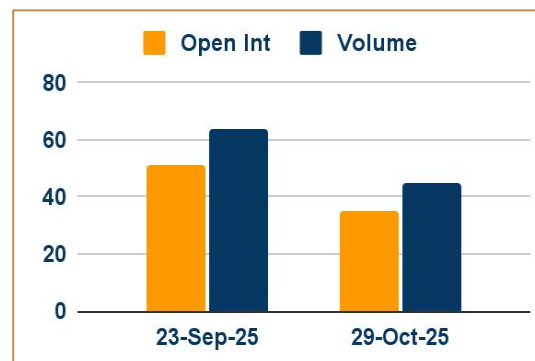
Gold hit fresh record high crossing Rs 1,14,000 bolstered by increased expectations of further U.S. rate cuts.

The Fed cut rates by 25 bps, citing labor market weakness, but warned about sticky inflation.

Governor Stephen Miran urged deeper cuts, while other officials called for caution.

SPDR Gold Trust holdings rose 0.60% to 1,000.57 tons, signaling renewed investor appetite.

OI & Volume



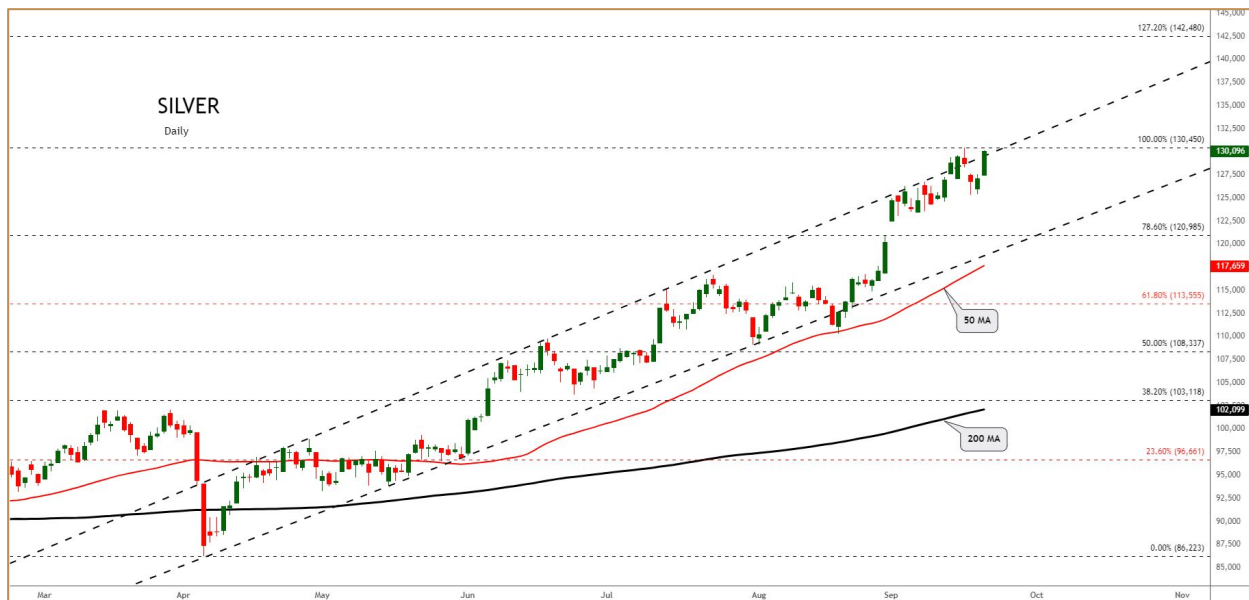
Spread

GOLD DEC-OCT	1003.00
GOLDMINI NOV-OCT	533.00

Trading Levels

Commodity	Expiry	Close	R2	R1	PP	S1	S2
GOLD	3-Oct-25	113836.00	115400.00	114615.00	113395.00	112610.00	111390.00
GOLD	5-Dec-25	114839.00	116320.00	115580.00	114400.00	113660.00	112480.00
GOLDMINI	3-Oct-25	113715.00	115420.00	114570.00	113240.00	112390.00	111060.00
GOLDMINI	5-Nov-25	114248.00	115795.00	115020.00	113765.00	112990.00	111735.00
Gold \$		3764.29	3818.38	3791.27	3764.00	3736.89	3709.62

Technical Snapshot



Be Cautious. Important resistance at 136800 while Support at 133500.

Observations

Silver trading range for the day is 132125-137165.

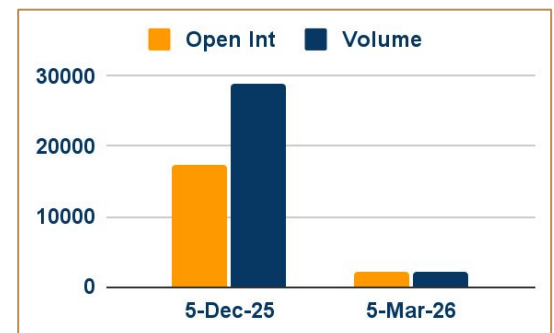
Silver rose as buoyed by expectations of more US interest rate cuts as well as a softer dollar.

Fed officials urged caution on further rate cuts, citing signs of stabilizing inflation.

Full impact of U.S. tariff shock yet to come as growth holds up, OECD says

According to CME FedWatch, markets see a 90% chance of a cut in October and 75% chance in December.

OI & Volume



Spread

SILVER MAR-DEC	1330.00
SILVERMINI FEB-NOV	1388.00

Trading Levels

Commodity	Expiry	Close	R2	R1	PP	S1	S2
SILVER	5-Dec-25	135062.00	137165.00	136110.00	134645.00	133590.00	132125.00
SILVER	5-Mar-26	136392.00	138705.00	137550.00	136090.00	134935.00	133475.00
SILVERMINI	28-Nov-25	134983.00	137160.00	136075.00	134490.00	133405.00	131820.00
SILVERMINI	27-Feb-26	136371.00	138410.00	137395.00	135935.00	134920.00	133460.00
Silver \$		43.95	44.86	44.40	44.02	43.56	43.18

Gold and silver surged to fresh record highs as expectations of further U.S. rate cuts and a weaker dollar boosted safe-haven demand, while the Indian Rupee sank to a lifetime low. New Fed Governor Stephen Miran called for aggressive rate cuts, adding that the Fed was misreading how tight it has set monetary policy and will put the job market at risk, a view countered in remarks by three of his colleagues who feel the central bank needs to remain cautious about inflation. According to the CME FedWatch tool, investors see two 25-basis point cuts, one each in October and December, with a 90% and 73% probability respectively.

ASIA GOLD – India premiums hit 10 – month high as festive season draws near; China discounts widen - Physical gold premiums in India rose to a 10-month high this week as record prices near a festive season failed to deter investors from buying bullion in anticipation of further gains, while discounts in China widened to a five-year peak. Dealers were quoting a premium of up to \$7 per ounce over official domestic prices, the highest since mid-November 2024. Last week, they were quoting a discount of up to \$6 and a premium of \$2. In top consumer China, dealers offered discounts of \$21-\$36 per ounce over global benchmark spot prices, the lowest level since May 2020, compared to \$17-\$24 last week. Gold in Hong Kong was sold at par to a \$1.60 premium, while in Singapore, premiums ranged from par to \$1.40. Japan's bullion traded at par to a premium of \$1.

Gold exports from Switzerland to China soared in August - Gold exports from Switzerland to China jumped 254% in August compared with July to their highest level since May 2024 and supplies to India rose, partly offsetting a slump in deliveries to the United States, Swiss customs data showed. The Swiss data showed that gold exports to China rose in August to 35 metric tons from 9.9 tons in July, while supplies to India, another major bullion consumer along with China, climbed to 15.2 tons from 13.5 tons. China's wholesale gold demand fell last month as investors directed their attention to equities, but imports to the country are supported by expectations that the wholesale demand would rise towards the end of September, Ray Jia, head of China research at the World Gold Council, said in a note. Gold exports from Switzerland, the world's biggest bullion refining and transit hub, to the U.S. fell to 295 kg in August from 51.0 tons in July as some refineries paused shipments to the U.S. amid uncertainty about the country's import tariffs.

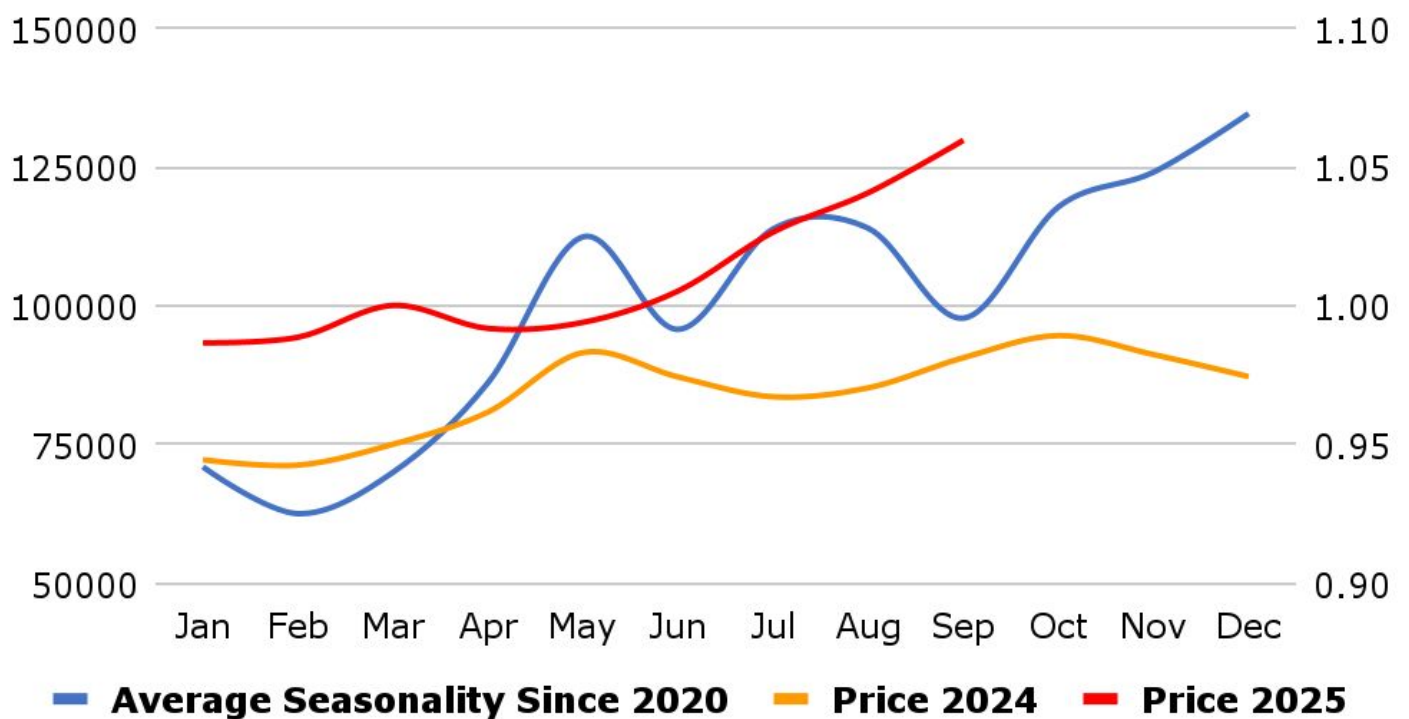
China's central bank buys gold in August for 10th month in a row - China's central bank added gold to its reserves in August, extending purchases of bullion into a 10th straight month, official data showed. China's gold reserves stood at 74.02 million fine troy ounces at the end of August, up from 73.96 million at the end of July. They were valued at \$253.84 billion, up from \$243.99 billion at the end of the previous month, according to data released by the central bank. Demand for physical gold in the world's largest producer, which is also a top consumer of the metal, was weak, due to high prices, with dealers offering discounts over the global benchmark to attract buyers.

The US has slapped tariffs on imports of one-kilo gold bars, in a move that threatens to upend the global bullion market and deal a fresh blow to Switzerland, the world's largest refining hub. The Customs Border Protection agency said one-kilo and 100-ounce gold bars should be classified under a customs code subject to levies, according to a so-called ruling letter dated July 31, which was seen by the Financial Times. Ruling letters are used by the US to clarify its trade policy. One-kilo bars are the most common form traded on Comex, the world's largest gold futures market, and comprise the bulk of Switzerland's bullion exports to the US. Switzerland exported \$61.5bn of gold to the US over the 12 months ending in June. That same volume would now be subject to an additional \$24bn in tariffs under Switzerland's 39 per cent tariff rate, which went into effect on Thursday.

MCX Gold Seasonality



MCX Silver Seasonality



USDINR Seasonality



Weekly Economic Data

Date	Curr.	Data
Sep 22	EUR	Consumer Confidence
Sep 23	EUR	French Flash Manufacturing PMI
Sep 23	EUR	French Flash Services PMI
Sep 23	EUR	German Flash Manufacturing PMI
Sep 23	EUR	German Flash Services PMI
Sep 23	EUR	Flash Manufacturing PMI
Sep 23	EUR	Flash Services PMI
Sep 23	USD	Current Account
Sep 23	USD	Flash Manufacturing PMI
Sep 23	USD	Flash Services PMI
Sep 23	USD	Richmond Manufacturing Index
Sep 24	EUR	German ifo Business Climate
Sep 24	USD	New Home Sales

Date	Curr.	Data
Sep 25	EUR	M3 Money Supply y/y
Sep 25	EUR	Private Loans y/y
Sep 25	USD	Final GDP q/q
Sep 25	USD	Unemployment Claims
Sep 25	USD	Core Durable Goods Orders m/m
Sep 25	USD	Durable Goods Orders m/m
Sep 25	USD	Final GDP Price Index q/q
Sep 25	USD	Goods Trade Balance
Sep 25	USD	Prelim Wholesale Inventories m/m
Sep 25	USD	Existing Home Sales
Sep 26	USD	Core PCE Price Index m/m
Sep 26	USD	Personal Income m/m
Sep 26	USD	Personal Spending m/m

This Report is prepared and distributed by Kedia Stocks & Commodities Research Pvt Ltd. Our SEBI REGISTRATION NUMBER - INH000006156. for information purposes only. The recommendations, if any, made herein are expressions of views and/or opinions and should not be deemed or construed to be neither advice for the purpose of purchase or sale through KSCRPL nor any solicitation or offering of any investment /trading opportunity. These information/opinions/ views are not meant to serve as a professional investment guide for the readers. No action is solicited based upon the information provided herein. Recipients of this Report should rely on information/data arising out of their own investigations. Readers are advised to seek independent professional advice and arrive at an informed trading/investment decision before executing any trades or making any investments. This Report has been prepared on the basis of publicly available information, internally developed data and other sources believed by KSCRPL to be reliable. KSCRPL or its directors, employees, affiliates or representatives do not assume any responsibility for or warrant the accuracy, completeness, adequacy and reliability of such information/opinions/ views. While due care has been taken to ensure that the disclosures and opinions given are fair and reasonable, none of the directors, employees, affiliates or representatives of KSCRPL shall be liable for any direct, indirect, special, incidental, consequential, punitive or exemplary damages, including lost profits arising in any way whatsoever from the information/opinions/views contained in this Report. The possession, circulation and/or distribution of this Report may be restricted or regulated in certain jurisdictions by appropriate laws. No action has been or will be taken by KSCRPL in any jurisdiction (other than India), where any action for such purpose (s) is required. Accordingly, this Report shall not be possessed, circulated and/ or distributed in any such country or jurisdiction unless such action is in compliance with all applicable laws and regulations of such country or jurisdiction. KSCRPL requires such a recipient to inform himself about and to observe any restrictions at his own expense, without any liability to KSCRPL. Any dispute arising out of this Report shall be subject to the exclusive jurisdiction of the Courts in India.

KEDIA ADVISORY**KEDIA STOCKS & COMMODITIES RESEARCH PVT LTD****Mumbai, India****SEBI REGISTRATION NUMBER - INH000006156****For more details, please contact: +91 93234 06035 / 96195 51022****Email: info@kediaadvisory.com****Regd.Off.: 1, 2, 3 & 4, 1st Floor, Tulip Bldg, Flower Valley Complex, Khadakpada Circle,
Kalyan-(W), Mumbai-421301**